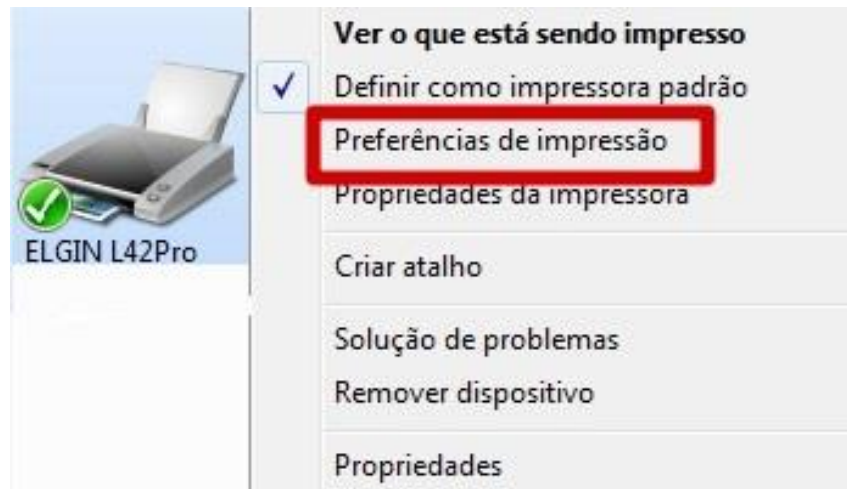
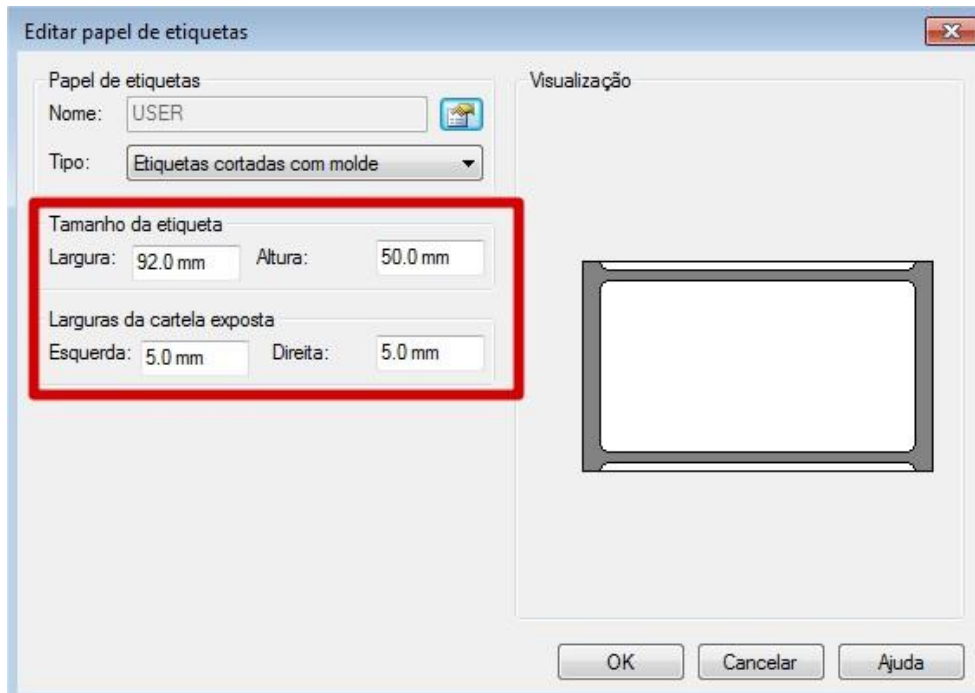


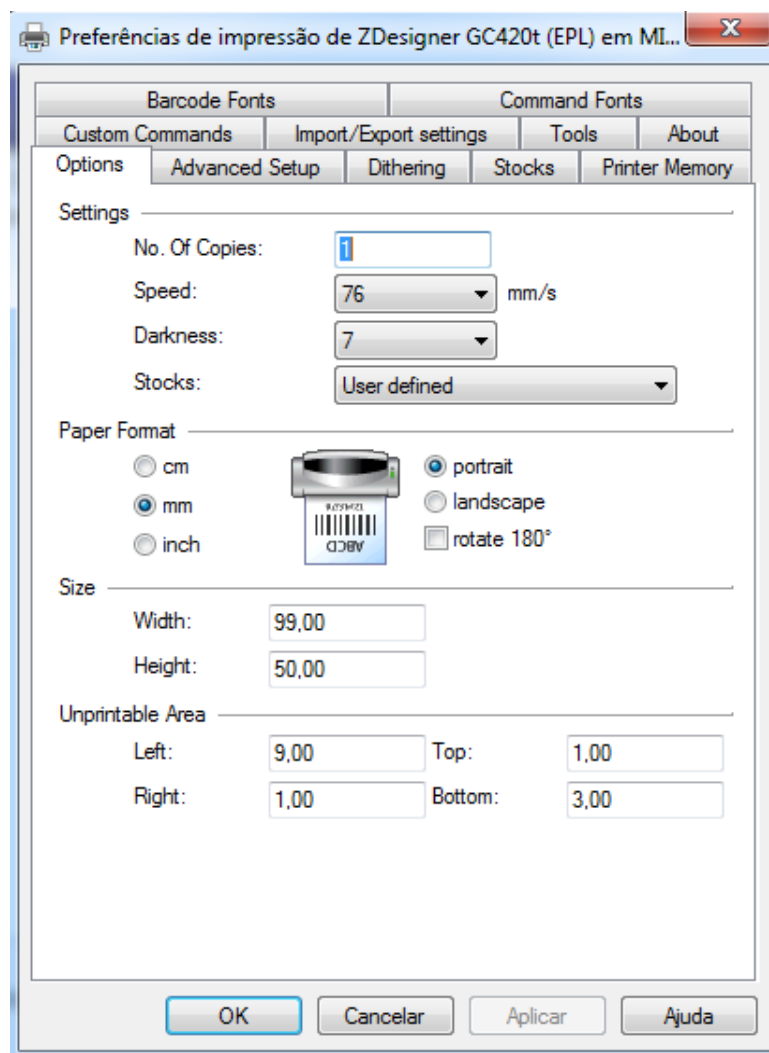
ELGIN L42 PRO

Configuração do tamanho da etiqueta na impressora



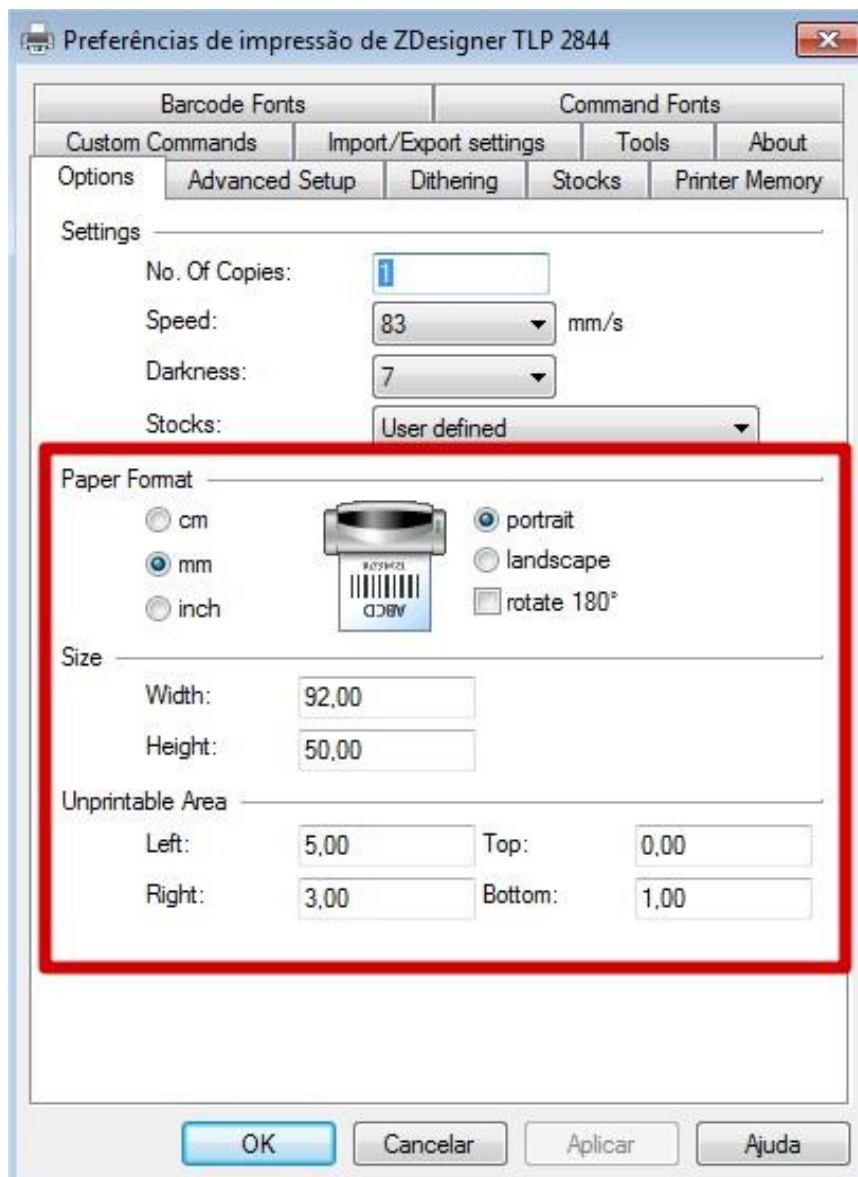
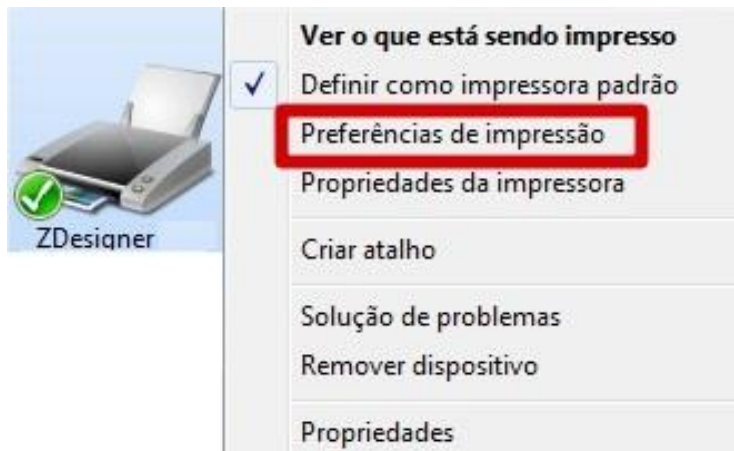


ZEBRA CG420t



ZEBRA TLP 2844

Configuração do tamanho da etiqueta na impressora



ZEBRA GT800

Preferências de impressão de ZDesigner GT800 (EPL)

Barcode Fonts | Command Fonts

Custom Commands | Import/Export settings | Tools | About

Options | Advanced Setup | Dithering | Stocks | Printer Memory

Settings

No. Of Copies:


Speed: mm/s

Darkness:

Stocks:

Paper Format

cm mm inch



portrait landscape rotate 180°

Size

Width:

Height:

Unprintable Area

Left: Top:

Right: Bottom:

OK Cancelar Aplicar Ajuda